



## LX LoRa® Connect

Introducing the cutting-edge external LX LoRa® Connect wireless system, which is designed to empower IP devices with the capability to transmit signals across distances of up to 10 kilometers.

Each LX LoRa Connect system is capable of connecting and supporting up to 500 devices without the need for expensive data cables and logistical challenges. This integration seamlessly incorporates devices into a unified network alongside other control, automation, and security systems.

The GJD LX LoRa Connect system offers advanced configuration capabilities, enabling intelligent responses to events. This innovation unlocks a world of possibilities, including escalating deterrent solutions, automated smart security systems, and customisable actions to precisely meet our clients' unique requirements.

## Key Benefits

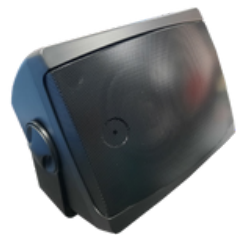
- **Cost effective deployment** - Low installation cost, low maintenance cost and low operating cost
- **Low power consumption** - Very low power drain enabling battery operation of sensors for 12 months
- **Cyber secure communication** - Features secure end-to-end 128 bit AES encryption, mutual authentication and confidentiality
- **Interference resilience** - Signals reflect off buildings and man-made obstacles and are still capable of travelling up to 10km
- **Long-range communication** - External detectors, illuminators, speakers and other devices can operate over large distances, perfect when devices need to be spread across large areas.
- **Wireless low infrastructure requirements** - No cabling required, resulting in significantly reduced infrastructure costs.
- **Scalability** - Devices can easily be added or removed from the network.
- **Web based user-interface** - Simplifies the intricate process of programming and commissioning devices, making it exceptionally user-friendly.



LX GateWay



D-TECT LX



LX Speaker



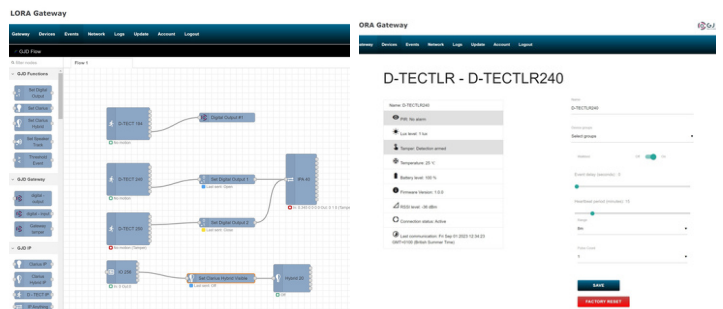
LX I/O Module



LX WL Illuminator



LX Walk Tester



Web based user-interface

### PRODUCT CODES

- GJD1200 LX GateWay** - Wireless central command hub
- GJD1210 LX Speaker** - Wireless high-volume speaker
- GJD1220 LX I/O Module** - Versatile third-party integration
- GJD1230 D-TECT LX** - High-Performance external wireless PIR
- GJD1260 LX Walk Tester** - Useful installation tool to assist setup
- GJD1410 LX WL Illuminator** - White-Light LED illuminator



### GJD1200 LX GateWay - Wireless Receiver & CPU

APPLICATION	Outdoor intrusion detection, deterrence and safety systems
NUMBER OF CONNECTIONS	Up to 500 devices per GateWay
TRANSMISSION RANGE	10 km
POWER SUPPLY	12-24V AC/DC power input PoE powered (isolated)
INTERFACE	Web-based user interface with flow-based rules engine
EVENT ACTIONS	Local relay outputs and IP-based notifications to 3rd party systems
SCHEDULES	Fully customisable schedules for smart events
LOGIC	IFTTT, Boolean, schedules, external integrations
AUDIT LOGS	Time-stamped, exportable logs of all events and actions
DIMENSIONS	230mm x 300mm
ALARM ACTIONS	Network alarm, relay. Easy direct integration with IP to VMS, enabling PTZ control, automatic video recording, voice enunciation and object position
SELF AWARENESS	Powerful rules based system allows the device to become a control system with internal knowledge base
AVERAGE POWER CONSUMPTION	4-12W
RADIO FREQUENCY	868Mhz
OPERATING TEMPERATURE	-30°C to +60°C -22°F to +140°F
INPUTS / OUTPUTS	4x relay outputs: SPST. 200mA 24V AC/DC 2x digital inputs (isolated) 1x power output: 12V 4W
ENCRYPTION	128 bit AES encryption
MONITORED HEART BEAT	Devices send signals every 15 minutes to confirm active status
INGRESS RATING	IP65

### GJD1410 LX WL Illuminator

POWER CABLE	3m including photocell following contact & remote telemetry input
INGRESS RATING	IP65
PHOTOCELL	Adjustable via LoRa gateway 20 -70 Lux
ILLUMINATION	Adjustable via LoRa gateway 0% - 100%
OPERATING TEMP	-50° to 50 °C (-58° to 122 °F)
WEIGHT	3.2Kg
DIMENSIONS	214 x 216 x 86mm
INPUT VOLTAGE	18-32V DC or 24V AC +/-10%
INPUT CURRENT	100W - 4.2A at 24V DC
LoRa	Communication frequency 868MHz.
WAVELENGTH	WL (6000K) IR (850nm and 940nm Options) Hybrid (WL & IR)

### GJD1210 LX Speaker

TRANSMISSION RANGE	10 km
POWER INPUT	12 V DC
SOUND RECORDING	Four individual messages of 30 seconds
RECORDING METHOD	Line in or internal microphone
AMPLIFIER POWER	1W audio amplifier
MOUNTING	Adjustable wall bracket (included)
COLOUR	Black or White
DIMENSIONS	151 mm x 123 mm
ENCLOSURE RATING	IP44

### GJD1220 LX I/O Module - Integrating 3rd Party Analogue Devices

TRANSMISSION RANGE	10 km
OUTPUT LOAD	200mA 24V AC/DC
POWER INPUT	2X CR123, 3 volt batteries (not included) or 12V DC
DEVICE BATTERY LIFE	12 months*
CONNECTIONS	1x alarm input, 1x relay output
DATA TRANSMITTED	Battery percentage and heartbeat
DIMENSIONS	120mm x 120mm
INGRESS RATING	IP65

### GJD1230 D-TECT LX - External Wireless PIR

TRANSMISSION RANGE	Up to 10 km metres Line of Sight
DETECTION RANGE	Up to 30m programmable
DETECTION FIELD	30m x 30m
DETECTION TRANSMITTED	Temperature, battery percentage, heartbeat and light level
TAMPER SWITCHES	Front & rear tamper switches, case open & removal from wall
POWER INPUT	2 x CR123, 3 volt batteries (not included)
PULSE COUNT	1 or 2
OPERATING TEMPERATURE	-20°C to +50°C -4°F to +122°F
PHOTOCELL	Lux adjustable
DEVICE BATTERY LIFE	Up to 1 year*
INGRESS RATING	IP65



This equipment operates on 868 MHz frequency band therefore must only be used in regions where this is permitted license-free.

\* Subject to number of transmissions

The LoRa® mark and LoRa logo are trademarks of Semtech Corporation or its subsidiaries.